

CRE ART MUSIC FESTIVAL

II EDITION
Long Island City, Queens

PRESENTED BY

CRE ART BOX

SUPPORTED BY



QueensTheatre

ASSOCIATE PRODUCER

LIC-A **THE PLAXALL**
long island city artists GALLERY

IN PARTNERSHIP WITH


STEINWAY & SONS

**PARK AVENUE
ARMORY**



Flushing Meadows Corona Park
www.queenstheatre.org
718-760-0064



QueensTheatre

**Home of theatre, dance, family
shows and community events
for the World's Borough.**

Live Arts & Music

WELCOME TO THE SECOND EDITION OF THE CREART MUSIC FESTIVAL

Founded in 2013 by pianist Josefina Urraca and flutist and composer Guillermo Laporta, CreArtBox is a NYC-based music organization that builds platforms to generate live art performances and collaborate with world-class artists and ensembles.

CreArtBox presents new and traditional music repertoire in intimate concert settings and through full-scale, multidisciplinary productions that incorporate innovative visual and multimedia designs. The group's core regularly functions as a flute, clarinet, violin, cello, and piano music ensemble, but holds a roster of over twenty NYC-based soloists, composers, choreographers, actors, and designers.

STAFF

Executive Director
Guillermo Laporta

Managing Director
Josefina Urraca

Marketing Coordinator
Evan Adams

Internships
Kareen Stewart
Kamarsha Potter

Advisory Board
Todd Reynolds
Sebastian Currier
Lewis Lockwood
Joshua Penman



Memories

August 30th
8.00pm

The piano trio is a staple of chamber music repertoire, with many composers across eras using the ensemble as a mouthpiece to share their artistic perspective. This program features piano trios from three composers whose diverse musical styles showcase the eclecticism of CreArtBox's performance and programming.

The first piece comes from Felix Mendelssohn, whose style represents trends of early romanticism. Next comes a piece from Joseph Haydn, famed classical era composer whose style influenced, molded, and developed chamber music as a genre while also providing the musical foundation from which many composers grew their own artistic voice. The evening ends with Ned Rorem's 1960 work for the ensemble, whose simultaneous intensity and beauty encapsulates the ever-shifting trends of the twentieth century.

<PROGRAM>

JOSEPH HAYDN (1732 - 1809)
Piano trio in D Major, Hob. XV:16 [12']

- I Allegro (D major)
- II Andantino più tosto allegretto (D minor)
- III Vivace assai (D major)

FELIX MENDELSSOHN (1809 - 1847)
Piano trio op.49 [35']

- I Molto allegro ed agitato (D minor)
- II Andante con moto tranquillo (B-flat major)
- III Scherzo: Leggiero e vivace (D major)
- IV Finale: Allegro assai appassionato (D minor, ending in D major)

NED ROREM (1923 -)
Trio for Flute, Cello and Piano [10']

- I Largo misterioso - Allegro

<PERFORMERS>

Josefina Urraca <piano>
Julia Yang <cello>
Guillermo Laporta <flute>

<Set, light, projection,
costume, and sound design by>

Isis de Coura
Josefina Urraca
Tagore Gonzalez
Guillermo Laporta





End of Times

August 31th
8.00pm

Few pieces in the repertoire have an origin as unique as Messiaen's Quartet for the End of Time. The piece premiered on January 15, 1941 at the Stalag VIIIA prisoner-of-war camp, in Görlitz, Germany. Here the composer had been confined since his capture in May 1940 during WWII. The work was composed by Messiaen while he was a prisoner in this camp, with the instrumentation determined by the instruments and performers that were available.

Complimenting this monumental piece, the program includes a piece by Chinese composer Dai Wei inspired by the Nepalese Temples that are badly damaged or completely destroyed, but yet the mandala-shaped bases of these structures remained intact. Nepali people coming to sit on the debris every night-worship with genuine smiles and hope. As if disaster, poverty, pollution even time are phenomenal existence. Dai Wei creates a soundscape that maintaining a sporadic texture throughout the piece, yet it gradually evolves into a peaceful non-violent cohesiveness. It is meant to symbolize how shattered and fragmentized things have a way of turning themselves into strength and beauty without losing their natural being.

<PROGRAM>

DAI WEI (1988 -)

Mandalas in the Rubble

OLIVIER MESSIAEN (1908 - 1992)

Quartet for the End of Time

I Liturgie de cristal
II Vocalise, pour l'Ange qui annonce
la fin du Temps
III Abîme des oiseaux
IV Intermède
V Louange à l'Éternité de Jésus
VI Danse de la fureur, pour les sept trompettes
VII Fouillis d'arcs-en-ciel, pour
l'Ange qui annonce la fin du Temps
VIII Louange à l'Immortalité de Jésus

Text by Carlos S. Bouma

<PERFORMERS>

Adelya Nartadjieva <violin>
Julia Yang <cello>
Jonathan Cohen <clarinet>
Josefina Urraca <piano>

<Set, light, projection,
costume, and sound design by>

Isis de Coura
Josefina Urraca
Tagore Gonzalez
Guillermo Laporta





Two Roads

September 1st
8.00pm

Two Road is a chamber opera for two sopranos, physical actress, dance ensemble, electronics & piano. Although framed as an opera due to his musical nature, this performance embraces the set, the choreography, and the light and sound design, as part of the dramaturgy elements that are written in the "libretto" following a parallel creative process.

<SYNOPSIS>

We are who we are, we are where we are because all the infinite decisions that we have taken in our past. Under this premise, Two Roads scrutinize the genesis of our choices, exploring the root of our consciences tied to our family, the conscious and unconscious decisions that we take constantly, addiction and routines, balance, and love.

<STRUCTURE>

I - The Unidirectional Flow Of Time
II - The Roots Of Our Consciousness
III - Conscious Decisions
IV - Influences And Manipulations
V - The Infinite Cycle Of Choices
VI - Addictions And Routines
VII - Epilogue

<ARTISTS>

Ariadne Greif <soprano>
Nina Dante <soprano>
Josefina Urraca <piano>
Taylor Hennings <dancer>
Can Wang <dancer>
Rosalie van Wamel <dancer>
Julie Berndt <actress>

<Concept, music, and dramaturgy>
Guillermo Laporta

<Scene direction and choreography>
Tagore Gonzalez

<Set and costume design>
Isis de Coura

<Music direction>
Josefina Urraca

<Executive Producers>
Josefina Urraca
Guillermo Laporta



ARTISTS

Josefina Urraca <piano and managing director>

New York City-based pianist Josefina Urraca is a frequent performer at venues in the United States and Europe. Josefina is a founding member and managing director of CreArtBox. Ms. Urraca has received numerous fellowships and prizes, including the Caja Madrid Foundation Scholarship, Manhattan School of Music Scholarship, Albéniz Foundation Scholarship, and 2nd prize at the International Piano Competition Ciudad de Carlet, National Piano Competition Ciudad de Linares, and National Competition Veguellina de Orbigo.



Piano

Her major teachers have been Dimitri Bashkirov, Claudio Martinez-Mehner, Eldar Nebolsin, Patrin Garcia-Barredo, Jospe Colom, Guigla Katsarava, and Kennedy Moretti. She holds degrees from Salamanca Conservatory, Alcalá de Henares University, Ecole Noxmale de Paris, Reina Sofia School of Music, and the Manhattan School of Music.

Guillermo Laporta <flute and artistic director>

Guillermo Laporta is a New York City-based flutist, designer, director, and producer. He is currently the executive and artistic director of CreArtBox. Laporta has a master's degree from the Royal College of Music of London and a Master's in Arts Management from Alcala University in Madrid. During his career as a flutist, he has performed a broad repertoire of symphonic, opera, and chamber works, with BBC Concert Orchestra, Asturias Symphony Orchestra, Oviedo Symphony Orchestra, sharing the stage with renowned musicians such as Sir. Roger Norrington, Andrew Litton, Pablo González, Vladimir Ashkenazy, Truls Mørk, Natalia Gutman, Labèque Sisters, and Ainhua Arteta.



Adelya Nartadjieva <violin>

Violinist Adelya Nartadjieva has performed extensively throughout Asia, Europe, Russia and the United States. A native of Tashkent, Uzbekistan, Adelya started the violin at the age of six and performed as a soloist with orchestras only 9 months after starting violin lessons. Adelya was a concertmaster of the Yong Siew Toh Conservatory Orchestra under the batons of Robert Spano and Eiji Oue, and the Yale Philharmonia under Peter Oundjian. She graduated from the Yale School of Music with a Master's Degree where she studied with Prof. Hyo Kang and Yong Siew Toh Conservatory of Music in Singapore with Prof. Qian Zhou. She is currently a member of the internationally acclaimed ensemble Sejong Soloists and a member of Jupiter Symphony Chamber Players.



Julia Yang <cello>

Praised for "her sense of joyful virtuosity" as concerto soloist, Julia Yang is a dynamic and versatile cellist, founding member of the prizewinning Merz Trio and recent member of Carnegie Hall's Ensemble Connect (South Florida Classical Review). As a chamber musician, Julia has been called the "stunning find of the evening" (New York Classical Review) and has been noted for her "deep tone" and "precision" (South Florida Classical Review). Ms. Yang has garnered top prizes at numerous competitions such as the Lennox International Competition and the Union League of Chicago's Young Artist Competition and performed as concerto soloist with the New World Symphony Orchestra, Central Florida Symphony Orchestra, and Northwestern University Symphony Orchestra, among others.



Jonathan Cohen <clarinet>

Jonathan Cohen was born in New Orleans, Louisiana into a musical family, beginning clarinet lessons with his father at the age of 10. He has performed as soloist with orchestras including the Louisiana Philharmonic Orchestra, the Montgomery Symphony Orchestra, and the Interlochen Arts Academy Orchestra. Jonathan has performed in the Sarasota Music Festival, the National Repertory Orchestra, the Brevard Music Center, and the Pacific Music Festival. Other appearances include concerts with the Orpheus Chamber Orchestra and the Metropolitan Opera Orchestra. His major teachers have been Steve Cohen, Nathan Williams, Anthony McGill, Mark Nuccio, and Yehuda Gilad. He holds degrees from the Manhattan School of Music and The Juilliard School.

FLUSHING TOWN HALL FALL/WINTER 2019

137-35 Northern Boulevard, Flushing, NY 11354
(718) 463-7700 (English & Spanish x222;
中文 x228; 한국어 x260)
www.flushingtownhall.org



LAW OFFICES OF MARCUS YI

ARTIST VISAS & GREEN CARDS



Located at 315 West 36th St New York
NY 10018 by appointment only.

MARCUSYILAW.COM

Marcus Yi, Esq. provides personalized immigration law representation for both employment and family based immigration matters. An artist himself, Mr. Yi understands the unique nature of the arts industry, and is fully qualified to provide the best service for artists seeking to work in the United States.



Tagore Gonzalez <choreographer and scene director>

Musician, stage director and audiovisual creator Tagore Gonzalez trained at Musikene, the Basque Country's Higher Music Center, and the Guildhall School of Music and Drama in London, and collaborated for several years with numerous national and international symphony orchestras. Since 2004, he has begun to experiment with the staging of his own concerts, founding and directing the CreArt Project in 2006, a company that was conceived as a platform to present and stage musicians and current musical creations in a constant dialogue with other disciplines. Since then, he has directed numerous scenic projects of genres such as opera, theater, dance or performance. Tagore is a teacher at the TAI University Center of Arts in Madrid.



Isis de Coura <set and custom designer>

Passionate about demolished architecture, still life, the art of the ephemeral, and any surface impregnated by the passage of time, Isis de Coura is trained in interior design, floral art, window dressing, and stage design and show architecture. She has worked as an art director in the advertising sector for companies such as Heineken, Fundación ONCE, Red Bull, Burger King, Kiehls, and Meliá, among others. In cinema, she has worked in numerous widely awarded short films, such as The Boy Who Wanted to Fly, nominated for best short film at the Goya Awards 2018. She also works in the world of video clips for artists like Nat Simons or Blackpanda. In her work as a set and costume designer, some projects from the last two years are worth mentioning, such as Lars Noren's intimate pleasures directed by José Martret, Beat G. A different beat released at Matadero Ships, The Abyss of Birds directed by Tagore González, and Signed Lejarraga produced by the CDN (National Dramatic Center).



Ariadne Greif <soprano>

Ariadne Greif, praised for her "luminous, expressive voice" (NYTimes), her "elastic and round high notes" (classiqueinfo), and her "mesmerizing stage presence" (East Anglian Daily Times), began her opera career as a 'boy' soprano in the Los Angeles area and at the LA Opera, eventually making an adult debut singing Lutoslawski's Chantefleurs et Chantefables with the American Symphony Orchestra. A champion of new music since her teens, she has premiered over fifty large-scale pieces and a half-dozen new operas. Ariadne founded Uncommon Temperament, a Manhattan-based baroque ensemble, with whom she toured three times, created a traveling production of Bach's Coffee Cantata, and made her Poisson Rouge debut, hailed as "...accomplished and winning..." by the NY Times.



Nina Dante <soprano>

Soprano/vocalist Nina Dante is a soloist, chamber musician, improviser and composer based in New York City. Musical experimentation and the continual discovery of the voice's technical ability and emotive power are the inspiring forces behind her work. Hailed for her "amazing performance of vocal versatility by a uniquely gifted young artist" (Chicago Classical Review), Dante has performed at Resonant Bodies Festival, BAM, Lampo, Issue Project Room, Roulette, the Kitchen, National Sawdust, the University of Chicago's Contempo, and the Renaissance Society, among many others. Dante's recent compositions have been featured on the Resonant Bodies Festival, Indexical, the Center for New Music, the 113 Twin Cities New Music Festival and the Essential Indexical recent release Early MMXVIII.

Mary Taylor Hennings <dancer>



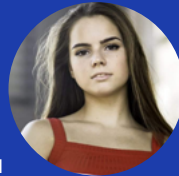
Taylor Hennings is an artist from Dallas, Texas. She is an alumnus of Booker T. Washington High School for the Performing and Visual Arts and just finished her freshman year on scholarship at The Boston Conservatory as a contemporary dance major. From 2014-2018 she attended the San Francisco Conservatory of Dance where she worked with Summer Lee Rhatigan, Alex Ketley, and Batsheva Dance Company members Bobbi Jene Smith, Or Schraiber, Tom Weinberger, and Bret Easterling. Taylor has had the pleasure of performing works by Alex Ketley, Ohad Naharin, Robert Battle, Peter Chu, Doug Varone, Jennifer Archibald, Maleek Washington, and many other influential choreographers.

Can Wang <dancer>



Can Wang ("Tsan Wahng") is a dancer and choreographer. She is of Chinese origin and influenced by both contemporary and classical dance, and the Western and Eastern culture. She has performed works by Stephanie Batten-Bland, Roy Assaf, Andrea Miller, Valeria Gonzalez, Katarzyna Skarpetowska, Helen Simoneau, Nacho Duato, Jose Limon, Martha Graham, and Merce Cunningham, among others. Her own choreographic works have been performed in China, South Korea and the United States. She is a collaborator with internationally acclaimed visual artists. She was a prizewinner in 2012 Chinese Lotus Dance Competition and has performed with the National Ballet of China. She is one of the ten recipients of Juilliard Career Advancement Fellowship in 2019, and is now a dancer at Buglisi Dance Theater.

Rosalie van Wamel <dancer>



Rosalie van Wamel is a dancer who comes from the Netherlands, where she studies dance and dance education at Fontys School of Fine and Performing Arts. She came to New York in 2019 to further herself as an international performer, choreographer, and teacher. Her work explores natural human behavior and society considering the perspective of both dancers and the audience. Whether she is performing, choreographing, or teaching, this research often leads Rosalie to create expressions that celebrates the beauty that exists in our humanity. This is her New York debut.

Julie Berndt <actress>



Julie has enjoyed performing experimental theater and classical works in Europe and the USA. She recently wrapped playing a murder suspect in the feature film, Nick and Nicky, a screwball comedy. Currently, she is the featured Narrator of the audio drama series, Visionaries, by Richard Seneque, soon to be released. Other portrayals include Lady Macbeth at the Stella Adler Studio; Zelda Fitzgerald at the Edinburgh Fringe; Home Free by Lanford Wilson at the Nat Horne Theater; Leads & Ensemble with the World Wide Lab of the Lincoln Center Directors' Lab. Julie trained at Juilliard in dance; in acting with Uta Hagen and the Co-Artistic directors Seth Barrish and Lee Brock of The Barrow Group, a Drama Desk award-winning company. Voice and diction with Jordan Yanco and members of the Lessac Institute.



Support

<Ticket sales cover only 25% of our operational cost>

CreArtBox relies on the generosity of music lovers like you to help us continue our mission to inspire passion for music and the arts. Ticket sales cover only 25% of our operational cost. If you can afford it, please consider making an extra donation so we may continue to commission new works and bring our artistic perspective to diverse audiences across the world. We love classical music, art, and culture, and believe that when we inspire new audiences, young composers, and performers, we help make the world a better place.

ALL NEW DONORS WILL RECEIVE

- Premium concert seating. We'll reserve our best seats for you.
- Special notification of CreArtBox activities throughout the year.
- Online access to the live recordings of our concerts.
- Complimentary tickets for your friends and family.
- Invitation to a CreArtBox rehearsal at Carnegie Hall for you and a guest.
- Invitations to cocktail parties, discussions, and other member appreciation events.
- An invitation for two to our Meet the Artist event, an exclusive interview with a featured artist from the season.
- Recognition in each program, the Annual Report, and our website.

HOW TO MAKE YOUR CONTRIBUTION

- Online at : <https://creartbox.nyc/donate>
- Paypal to info@creartbox.nyc
- Venmo to @guillermolaporta
-

Want to make a tax-deductible donation?

CreArtBox is a sponsored project of Fractured Atlas, a non-profit arts service organization. Fractured Atlas will receive grants for the charitable purposes of CreArtBox, provide oversight to ensure that grant funds are used in accordance with grant agreements, and provide reports as required by the grantor. Contributions for the charitable purposes of CreArtBox must be made payable to Fractured Atlas and are tax-deductible to the extent permitted by law.

19/20
SEASON

YOU DON'T WANT TO
MISS THE REST OF
CREARTBOX'S
2019/20 SEASON

CreArtBox's 2019/20 season will continue with a residency at the Renee Weiler Concert Hall and the DiMenna Center, a full-stage production at The Tank Theater, and multiple performances in Boston, Chicago, and Tokyo. Season highlights include Aaron Copland's Appalachian Spring, Maurice Ravel's Introduction and Allegro, Sebastian Currier's Remix, Johann Sebastian Bach's Brandenburg Concerto No. 5, and the world premieres of three newly commissioned pieces by Dai Wei, Evan O. Adams, and Brian Shank.

CreArt Music Series is a program presented by CreArtBox in partnership with Greenwich House and the New York Society for Ethical Culture offering 3 to 7 public performances per year from October to May. On these performances, audiences of all ages gather together to experience a unique event where classical music meets visual art creating an exceptional experience. This project also encourages the creation of new compositions of music, combined with traditional music repertoire, and other disciplines, providing creators and performers a platform for working together, creating, recording, and presenting new works to the public.

The CreArt Music Series also resides in Manhattan in order to reach a broader audience, as well as commission even more new music and bring our intimate concert setup to even more people. The ensemble will also tour through Japan and Chicago; be sure to catch us if you will be around!

Tickets for the upcoming season are available now as you exit the CreArt Music Festival, or online at <https://creartbox.nyc/pages/series>.

CRE ART BOX

SUBSCRIBE TO OUR UPCOMING PERFORMANCES

19/20
SEASON

OCT

5th

CREART
MUSIC SERIES

BILITIS

RENEE WEILER CONCERT HALL AT GREENWICH HOUSE
CO-PRESENTED WITH **PARHELION TRIO**

Seong Ae Kim WORLD PREMIER
New commission

Claude Debussy
The Songs of Bilitis for two flutes,
two pianos, celesta, and reciter.

Philip Glass
Music in Similar Motion

Ludwig van Beethoven
Sonata in D op.6 Piano duet

Camille Saint-Saëns
Tarantelle, Op.6

NOV

26th Chicago

PIANO FORTE

30th Tokyo

HALF MOON HALL

DEC

1st Tokyo

RYOGOKU MONTEN HALL

AWAVE

a multimedia concert experience
offering an entirely new body of
repertory for solo flute, piano,
video, and sound design.

DEC

5th

CREART
MUSIC SERIES

BRANDENBURG

RENEE WEILER CONCERT HALL AT GREENWICH HOUSE
IN COLLABORATION WITH **ARTE STRING QUARTET**

Ludwig van Beethoven
String quartet

Philip Lasser
Ballade for flute & string quartet

Evan O. Adams WORLD PREMIER
New commission

Johann Sebastian Bach
Brandenburg Concerto No. 5

FEB

14th & 15th

TWO ROADS

THE TANK THEATER, MANHATTAN

a live arts production featuring
a mezzo-soprano, a dance theater
ensemble, electronics, piano,
percussion, and a movable set.

MAY

10th

FREDERICK COLLECTION

THE FREDERICK COLLECTION, ASHBURNHAM, MASSACHUSETTS

*Performed with 1890 Rudall Carte Boehm
Flute and 1830 Tröndlin Piano.*

Felix Mendelssohn
Variations sérieuses, Op. 54

L. van Beethoven
Piano Sonata No. 8, op. 13

F. Schubert
Introduction and Variations D. 802

JUN

6th

CREART
MUSIC SERIES

APPALACHIAN SPRING

DIMENNA CENTER, MARY CARY HALL

Brian Shank WORLD PREMIER
New commission

Maurice Ravel
Introduction and Allegro

Sebastian Currier
Remix

Aaron Copland
Appalachian Spring